

# VHF sectors in VTS Scheldt Area

VERSION 4.0

Clear communication on every channel



Order this folder:  
[info@vts-scheldt.net](mailto:info@vts-scheldt.net)  
 0031 115 68 68 05  
 0032 59 25 54 40

<b>COMPULSORY REPORTING AND LISTENING WATCH</b>  for ALL COMMERCIAL SHIPPING on the TRAFFIC CHANNELS	<b>COMPULSORY LISTENING WATCH</b>  for RECREATIONAL CRAFT EQUIPPED WITH VHF on the TRAFFIC CHANNELS
--	---

REPORTING FOR COMMERCIAL SHIPPING IN THE VTS SCHELDT AREA		
<p style="text-align: center;"><b><i>Inbound from sea:</i></b></p> <p>Depending on direction of approach, report 1/2 hour before arrival in the VTS area on the traffic channel belonging to the first sector you enter.</p> <p><b><i>Message:</i></b>  <i>name of the vessel</i>  <i>position</i>  <i>draught</i>  <i>destination</i>  <i>ETA pilot station</i></p>	<p style="text-align: center;"><b><i>Departing from a port, berth, jetty or anchorage in the VTS area:</i></b></p> <p>Report on the traffic channel appropriate for the area (unless otherwise indicated in this brochure) before entering the fairway.</p> <p><b><i>Message:</i></b>  <i>name of the vessel</i>  <i>position</i>  <i>draught</i>  <i>planned route</i>  <i>destination</i>  <i>for barges carrying one or more blue cones: the number of cones</i></p>	<p style="text-align: center;"><b><i>Passage boundary sector:</i></b></p> <p>Always report to the next sector, always on the traffic channel. A departure report to the previous sector is not required.</p> <p><b><i>Message:</i></b>  <i>name of the vessel</i>  <i>position</i>  <i>planned route</i>  <i>(where different routes are possible)</i></p>

<b>ATTENTION</b>  The compulsory language is Dutch or English.  Make clear traffic arrangements directly with the other traffic participants.  Always call another ship by the name of the vessel or by position and/or direction.
--



The Bilateral Nautical Management is a ratified cooperation between the Flemish and Dutch government and is responsible for the safe and efficient shipping in the Scheldt area.

Wandelaar approach	traffic centre Wandelaar pilot Wandelaar	traffic centre Zeebrugge	traffic centre Steenbank pilot Steenbank	traffic centre Vlissingen	traffic centre Terneuzen	traffic centre Hansweert	<b>TRAFFIC CHANNELS (compulsory listening watch)</b> Traffic arrangements ship-ship. Traffic information - general. Shore based pilotage. Compulsory reporting.
VHF 60	VHF 65	VHF 69  h+10'	VHF 64	VHF 14  h+50'	VHF 03	VHF 65	

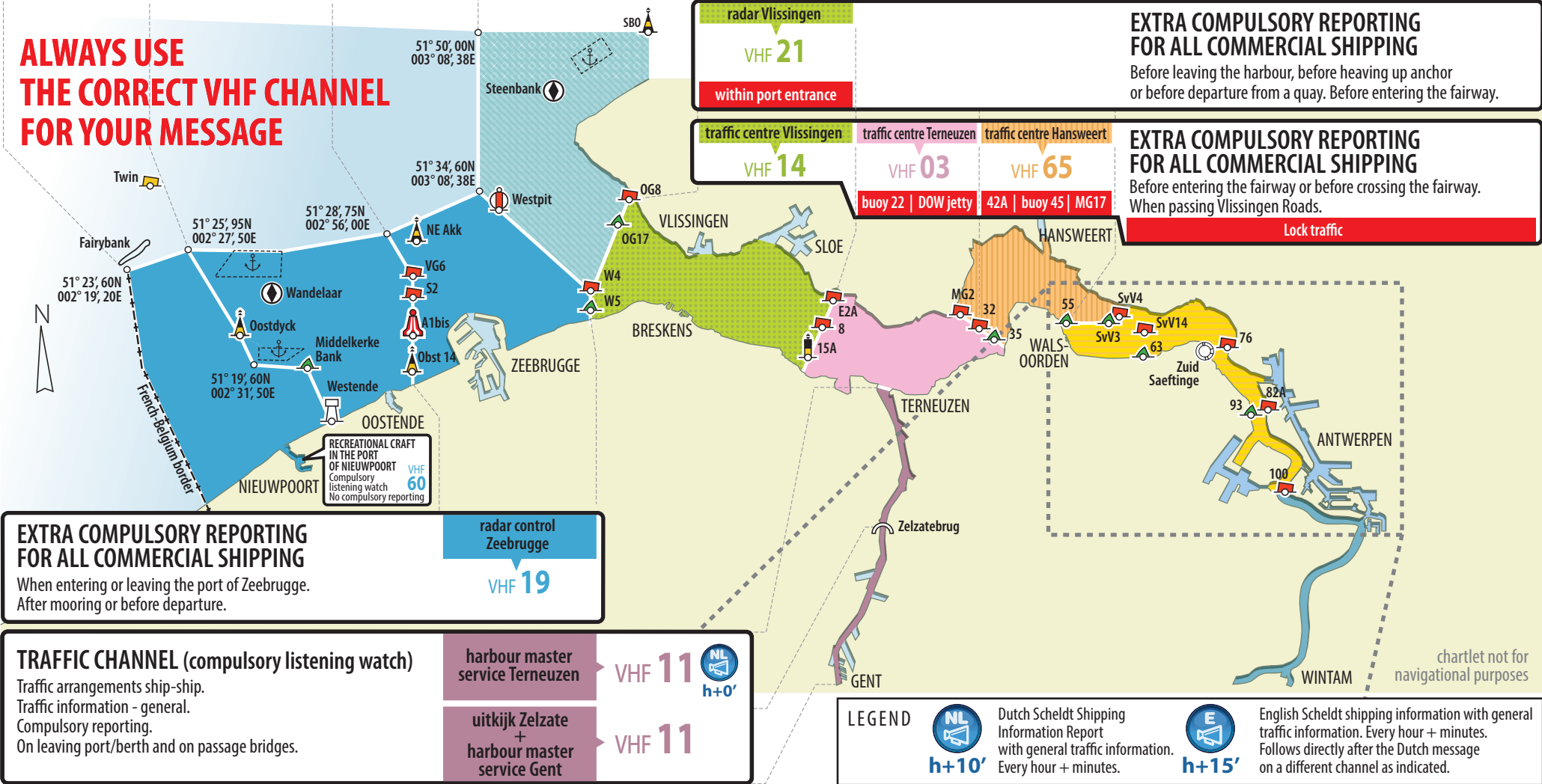
radar Zeebrugge	traffic centre Steenbank	radar Vlissingen	radar Terneuzen	radar Hansweert	<b>RADAR CHANNELS</b> Navigational assistance (Radar information). Port information when there is no specific port information channel available.
VHF 04  h+15'	VHF 64	VHF 21  h+55'	VHF 03	VHF 65	

**EXTRA COMPULSORY REPORTING FOR ALL COMMERCIAL SHIPPING**  
Before leaving the harbour, before heaving up anchor or before departure from a quay. Before entering the fairway.

**EXTRA COMPULSORY REPORTING FOR ALL COMMERCIAL SHIPPING**  
Before entering the fairway or before crossing the fairway. When passing Vlissingen Roads.

**Lock traffic**


**ALWAYS USE THE CORRECT VHF CHANNEL FOR YOUR MESSAGE**



**EXTRA COMPULSORY REPORTING FOR ALL COMMERCIAL SHIPPING**  
When entering or leaving the port of Zeebrugge. After mooring or before departure.

radar control Zeebrugge  
VHF 19

**TRAFFIC CHANNEL (compulsory listening watch)**  
Traffic arrangements ship-ship.  
Traffic information - general.  
Compulsory reporting.  
On leaving port/berth and on passage bridges.

harbour master service Terneuzen → VHF 11  h+0'

uitkijk Zelzate + harbour master service Gent → VHF 11

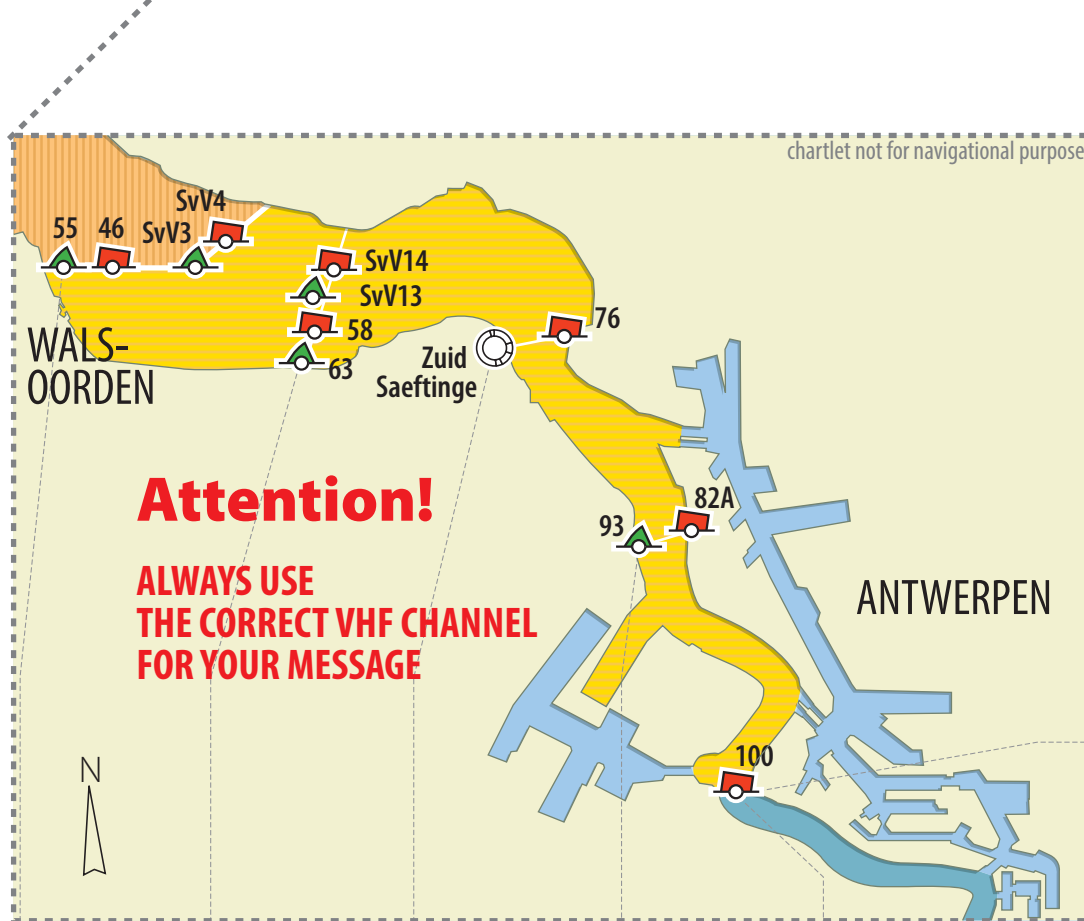
**LEGEND**

 h+10' Dutch Scheldt Shipping Information Report with general traffic information. Every hour + minutes.

 h+15' English Scheldt shipping information with general traffic information. Every hour + minutes. Follows directly after the Dutch message on a different channel as indicated.

**Differentiate between:**

- VHF channel 12  
TRAFFIC CHANNEL
- VHF channel 85  
PORT OPERATIONS CHANNEL
- **VHF channel 81**  
channel for non-nautical information between barges  
TERMINAL CHANNEL BARGES



**Attention!**  
ALWAYS USE  
THE CORRECT VHF CHANNEL  
FOR YOUR MESSAGE

**Above buoy 100, there is:**

- compulsory listening watch on the ship-ship channel VHF 10
- no active monitoring by the VTS Centre
- no radar coverage at the VTS Centre
- for seagoing vessels: compulsory reporting to other traffic ingoing at buoy 116, outgoing at buoy 111 on channel VHF 10

**ship-ship TRAFFIC CHANNEL (compulsory listening watch)**  
VHF 10  
Traffic arrangements ship-ship.  
Traffic information - general.  
Compulsory reporting.

**EXTRA REPORTING FOR SEAGOING VESSELS**

*before leaving*  
(= before unmooring in lock or at terminal)  
on VHF channel 85

- Message:**  
Name of the vessel  
Position  
Draught  
Destination  
Relevant manoeuvres

**Inbound to Antwerpen:**  
at Buoy 35  
at Buoy 65  
Zuid Saeftinge  
on VHF channel 12

- Message:**  
Name of the vessel  
Position

traffic centre Zandvliet

VHF 12

**TRAFFIC CHANNEL (compulsory listening watch)**  
Traffic arrangements ship-ship.  
Traffic information - general.  
Compulsory reporting.  
Before entering the fairway or before crossing the fairway.

radar Waarde	radar Saeftinge	radar Zandvliet	radar Kruisschans
VHF 19	VHF 21	VHF 04	VHF 66

**RADAR CHANNELS**  
Navigational assistance (Radar information).

SID Antwerpen

VHF 85

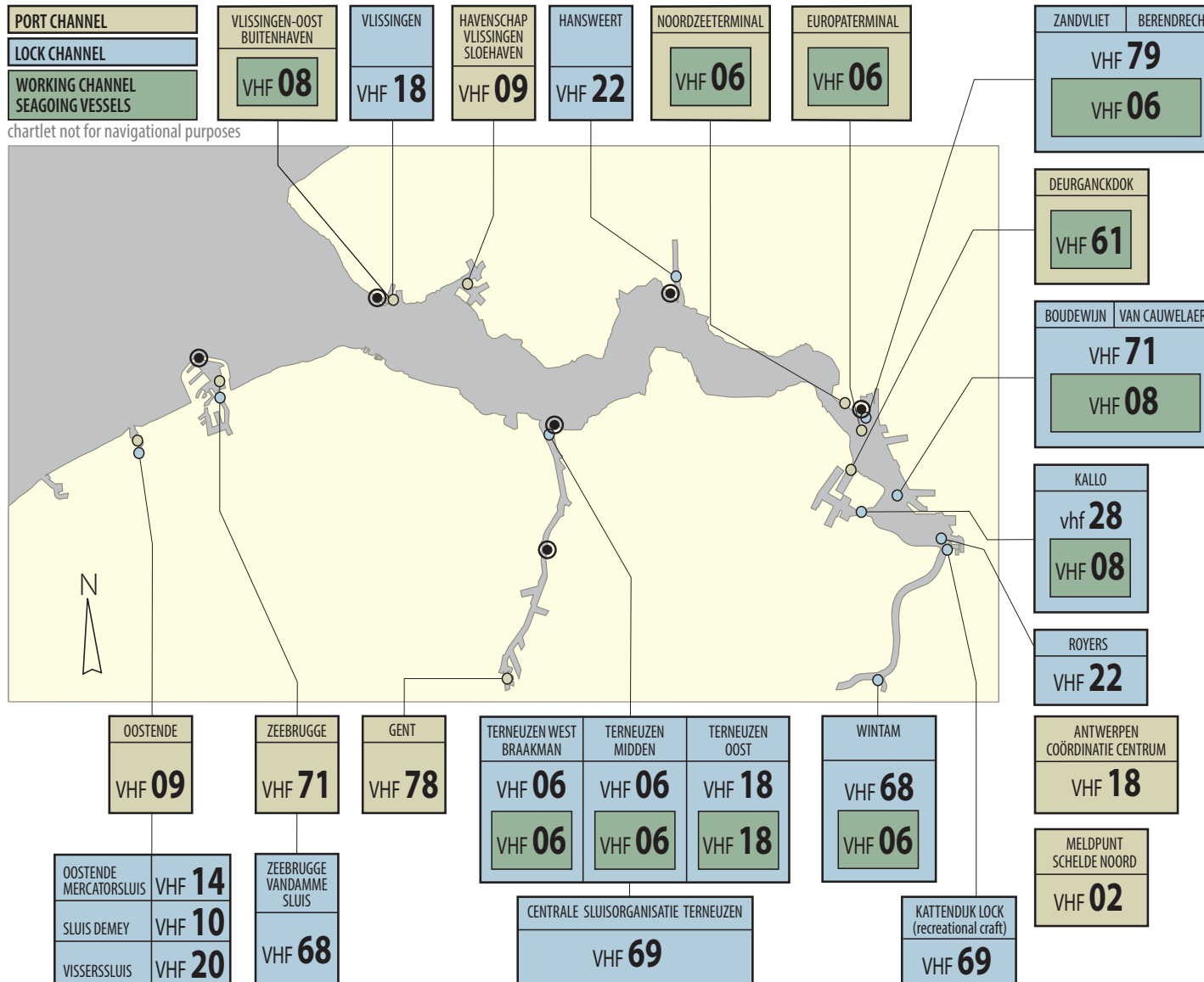
**PORT OPERATIONS CHANNEL**  
Information exchange on the initiative of the VTS centre or the vessel / Lock information.  
Moored at jetties, berths and locks.

terminal channel barges

VHF 81

**TERMINAL CHANNEL BARGES**  
Non-nautical information between barges concerning loading/discharging sequences, berthing positions, etc ...  
This channel is not monitored by the VTS centre.

# ATTENTION: NOT VTS CHANNELS



## CONTACT DETAILS VTS SCHELDT AREA

### Traffic Centre Zeebrugge

Tel: +32 (0)50 55 08 02  
 Fax: +32 (0)50 54 74 00  
 Email: vts-zeebrugge@vts-scheldt.net

### Traffic Centre Vlissingen

Tel: +31 (0)118 42 47 90  
 Fax: +31 (0)118 47 25 03  
 Email: vts-vlissingen@vts-scheldt.net

### Schelde Coordination Centre

Tel: +31 (0) 118 42 47 58  
 +31 (0) 118 42 47 60  
 Fax: +31 (0) 118 41 81 42  
 +31 (0) 118 46 77 00  
 Email: gna-scc@vts-scheldt.net

### Traffic Centre Terneuzen

Tel: +31 (0)115 68 24 00  
 Fax: +31 (0)115 63 06 99  
 Email: vts-terneuzen@vts-scheldt.net

### Traffic Centre Hansweert

Tel: +31 (0)113 38 27 51  
 Fax: +31 (0)113 38 33 11  
 Email: vts-hansweert@vts-scheldt.net

### Traffic Centre Zandvliet

Tel: +32 (0)3 569 91 23  
 Fax: +32 (0)3 569 92 48  
 Email: vts-zandvliet@vts-scheldt.net

### Uitkijk Zelzate

Tel: +32 (0)9 344 51 64  
 Fax: +32 (0)9 372 79 98

### MORE INFORMATION?

[www.vts-scheldt.net](http://www.vts-scheldt.net)  
[info@vts-scheldt.net](mailto:info@vts-scheldt.net)

[www.worldvtsguide.org](http://www.worldvtsguide.org)



### HYDRO-METEO INFO:

[www.kustweerbericht.be](http://www.kustweerbericht.be)  
[www.hymedis.net](http://www.hymedis.net)

marifoonnet Belgische binnenwateren  
[www.binnenvaart.be](http://www.binnenvaart.be)



Rijkswaterstaat  
 Ministerie van Verkeer en Waterstaat



agentschap  
 Maritieme Dienstverlening  
 en Kust

